

ADMISSIONS

For information about fees, admission criteria and procedures, please contact the School (See contact details below).

CONTACT DETAILS

PO Box 68
Hermanus 7200
Tel: 028 312 4949

Email: school@camphill-hermanus.org.za
Website: www.camphillschool.org.za

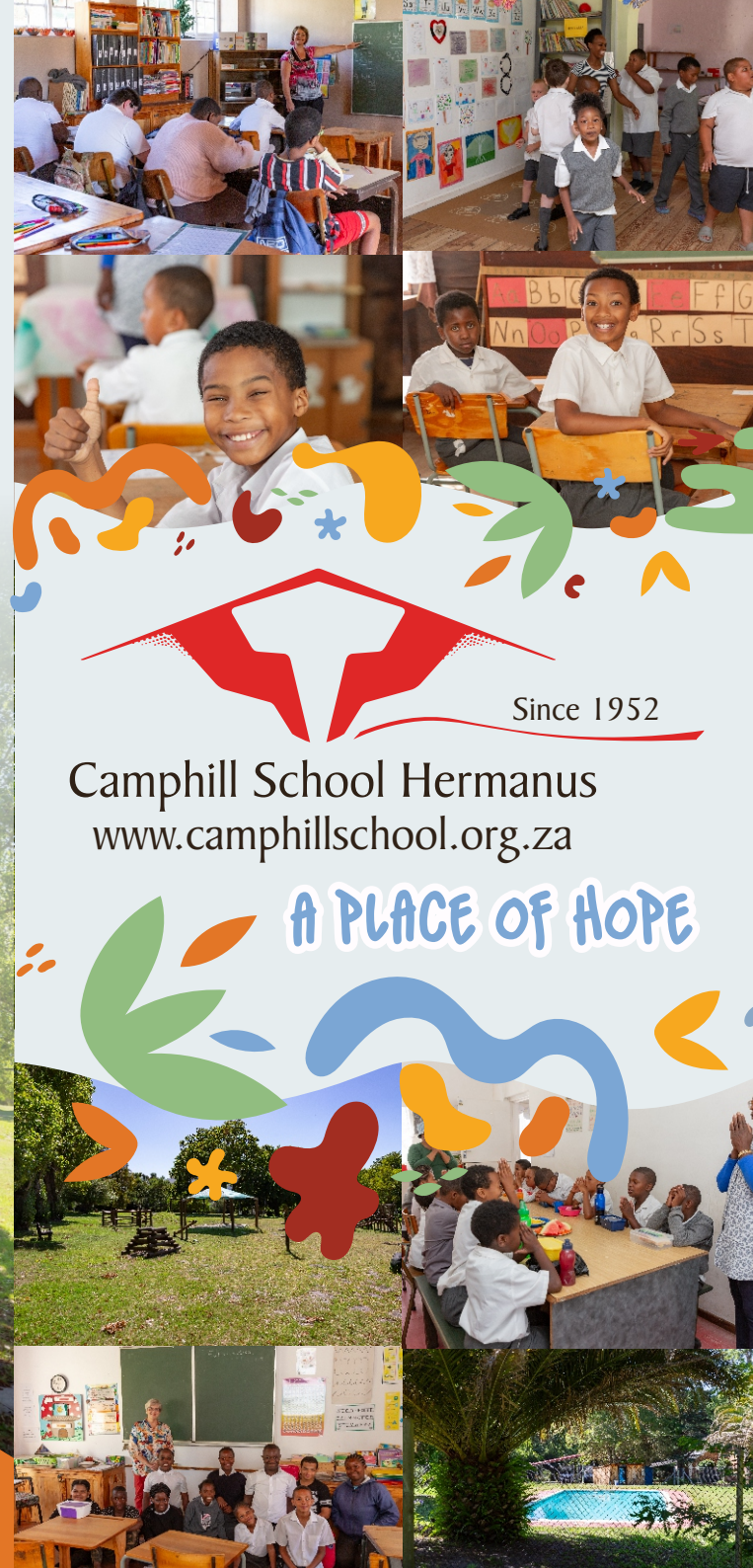
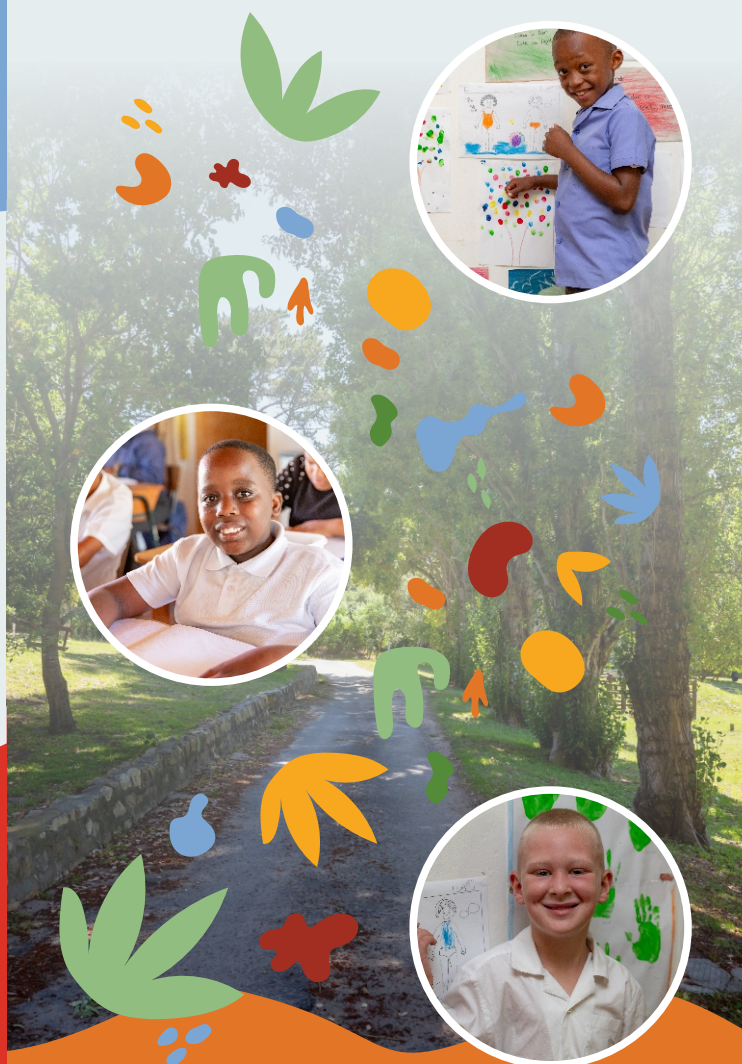
In compliance with its founding Memorandum and Articles of Association, Camphill School is governed by a Board of Directors and its financial accounts are audited annually by a certified firm of Chartered Accountants and presented for scrutiny and approval at the Annual General Meeting.

Camphill School is supported by a limited subsidy from the WCED. School fees are well below the actual cost to the School per child and may be adjusted according to the financial circumstances of the parents. Approximately 65% of the School's operating budget is sourced from private fundraising.

CAMPBILL SCHOOL BANK DETAILS

Account: Camphill School
Bank: FNB, Hermanus (Code: 200412)
Account No: 524 7070 4936
SWIFT code: FIRNZAJJ
Ref: CSP + Company name/ Name

- Camphill School is an independent, special needs day school.
(Registration Number 52/00007/08).
- NPO Number: 003-320
- Camphill School is Section 18A tax exempt.
- The School is registered with the Western Cape Education Department (WCED) as an independent special needs school.



Since 1952

Camphill School Hermanus
www.camphillschool.org.za

A PLACE OF HOPE



CAMPBILL SCHOOL HERMANUS

Tucked into the folds of the tranquil Hemel en Aarde (Heaven and Earth) Valley near Hermanus in the Western Cape Province of South Africa, lies Camphill School, a haven for children with intellectual and other disabilities. Since 1952 generations of children have enjoyed the benefit of high quality education and care at the School.

Rooted in the world-wide Camphill Movement, the School believes that all children, no matter what their disability, carry within them a divine spark of humanity, worthy of love, respect and nurturing. In this caring environment, they are assisted to grow to their full, unique potential.

One of only two small special needs schools in the vast, largely-rural Overberg region, Camphill caters for between 55 and 65 day learners, from 7 to 18 years of age.

At Camphill School the learners are happy and self-confident. They are loved for the special people they are and offered a chance at self-actualisation and hope.

DEVELOPING FREE, CONFIDENT AND SELF-AFFIRMED YOUNG PEOPLE

Camphill School Hermanus is an **independent special needs school**. In line with the founding principles of the Camphill movement, the School maintains the ethos of loving respect for the dignity of the child and a desire to develop his/her unique potential. Philosophically, it adheres to the Camphill concept of holistic education, but primarily follows the South African Education Department's curriculum adapted for learners with special needs children. Only learners referred to our School by an educational psychologist qualify for admission.

In addition to teaching basic competence in literacy, numeracy, language and life skills, at each child's level, there is a strong emphasis on spiritual growth and practical skills, skills, like woodwork, needlework, home life skills and car wash; as well as creative expression through arts and crafts, story-telling, music and movement. The learners in the vocational phase participate in vocational and life skills workshops and a few are selected to do hospitality training at Only Specials Cafe in Hermanus to prepare them for the world of work and life after school.

From kindergarten to the vocational phase, classes are small and the children receive individual attention from well-qualified teachers aided by dedicated teaching assistants. A characteristic of all the staff at Camphill School, from School Principal to garden-ers, is their single minded commitment to the care and development of the learners.



THERAPY

Given the nature and wide spectrum of disabilities represented at the School, a range of therapies is integrated into the care and education of each child. A team of part-time therapists, backed up by an educational psychologist and a social worker, collaborate closely with the Head: Educational Curriculum Delivery; Head: Health, Therapeutic, Psychological and Social Services, in a multi disciplinary approach to the development of each child. The learners are individually assessed and specific development programmes designed. Progress is continuously monitored and the programmes adjusted where necessary. Therapeutic disciplines currently include occupational and speech therapy, as well as art, music, massage, cranial therapy and eurythmy therapies. Each child in the school has access to at least two of these modalities at any given time.



DAY SCHOOL

Camphill operates on a four-term basis; school starts at 8:30 and ends at 14:30, except on Fridays when it closes at 13:00. School buses collect the learners from their homes in the mornings in Hawston, Zwelihle and Mount Pleasant and take them back there in the afternoons, accompanied by teachers and class assistants. Pupils are divided into classes according to age and ability and a high adult-to-child ratio is maintained. Daily, each child receives a balanced and nutritious lunch, as well as a morning snack. In addition to school and therapy sessions, plenty of time is set aside for play and rest. Regular educational outings are organised for individual classes, as well as the whole School. The pupils have access, under supervision, to the swimming pool and the computer lab.

